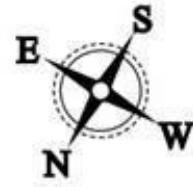


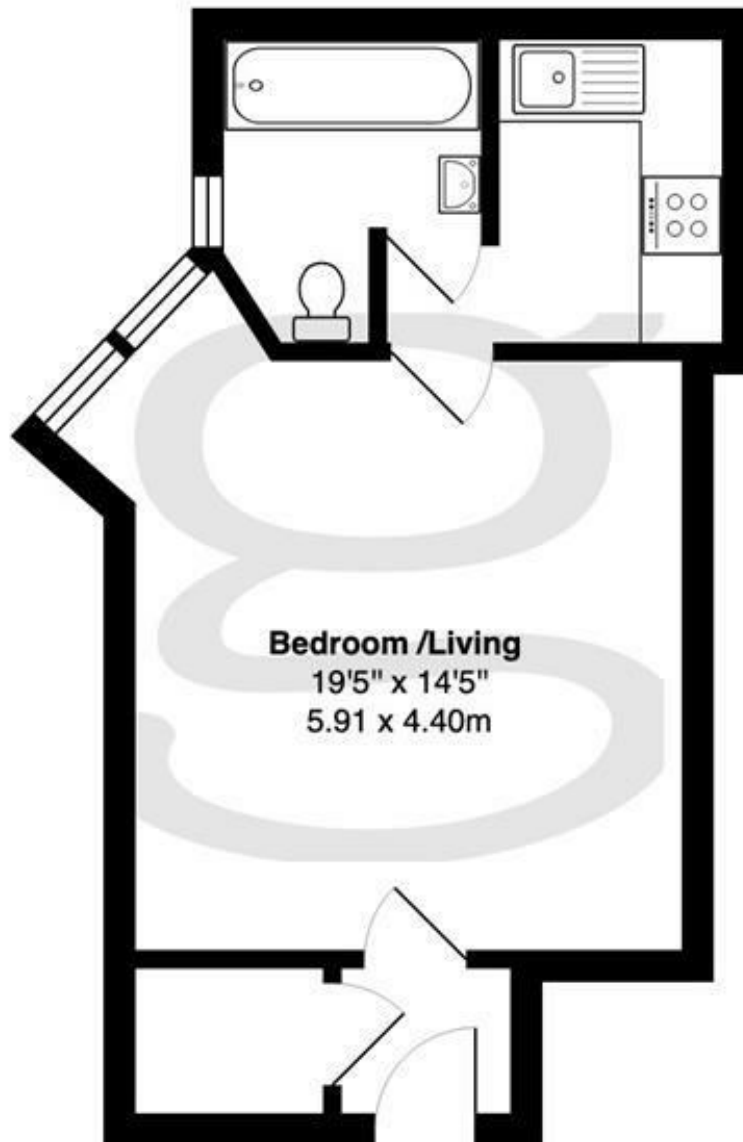


Abbey Road, St John's Wood NW8 £350,000 null





Kitchen
8'2" x 7'5"
2.50 x 2.26m



Bedroom /Living
19'5" x 14'5"
5.91 x 4.40m

Abbey House, Abbey Road NW8

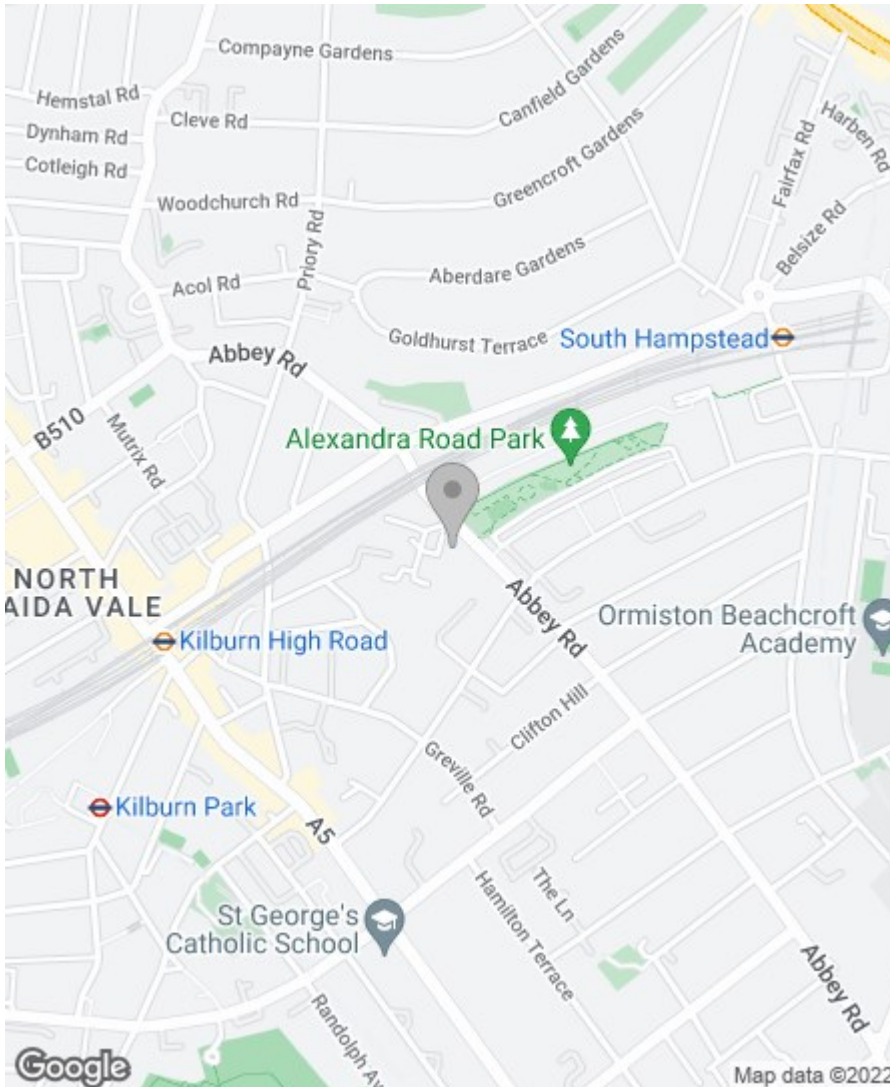
Total Gross Area: 332 ft² ... 30.9 m²

All measurements are approximate and for identification guideline purposes only, not to scale.
Compliant with the RICS code of measuring practice

Property Overview

Location	St John's Wood, NW8
Price	Asking Price £350,000
Bedrooms	0
Bathrooms	1
Receptions	1
Council	
Tax Band	
Furnishing	null

Key Features



Energy Efficiency Rating

	Current	Potential
Very energy efficient - lower running costs		
(92 plus) A		
(81-91) B		
(69-80) C		
(55-68) D		
(39-54) E		
(21-38) F		
(1-20) G		
Not energy efficient - higher running costs		

England & Wales

EU Directive
2002/91/EC



Environmental Impact (CO₂) Rating

	Current	Potential
Very environmentally friendly - lower CO ₂ emissions		
(92 plus) A		
(81-91) B		
(69-80) C		
(55-68) D		
(39-54) E		
(21-38) F		
(1-20) G		
Not environmentally friendly - higher CO ₂ emissions		

England & Wales

EU Directive
2002/91/EC



IMPORTANT NOTICE: All of the information is intended only as a guide to a prospective purchaser and does not constitute any part of an offer or contract. Any measurements or distances referred to herein are approximate only. Any information contained herein (whether in the text, plans or photographs) is given in good faith and cannot be relied upon as being a statement or representation of fact. Should you proceed with the purchase of the property, your solicitor must verify these details. We have not carried out a detailed survey nor tested the services, appliances and specific fittings. In accordance with current legislation we would advise you that the measurements on these particulars are imperial. The formula for conversion to metric is as follows:- 1' (one foot) = 30.4cm (centimetres), 1m (one metre) = 3'29 (feet).

